



# WBOP PRIMARY SCHOOL CHAMPS EVENT MANUAL

September 10th 2025

Proudly brought to you by DirtCraft & BOP Principals Association



Version 1

## Contents

Introduction .....	1
Overview .....	2
Schedule.....	2
Entry Criteria .....	3
Race time.....	3
Volunteers.....	3
Team Relay Event .....	3
Course & Parking.....	4
Manager Information .....	5
Technical Testing .....	5
Contingency Plan .....	5

Version 1 - July 2025

## Introduction

Welcome to the 2025 WBOP Primary School Champs event.

We appreciate your efforts to travel from around the region to attend this event.

Tristan Haycock – 2025 WBOP Primary School Champs Mountain Biking Event Director



## Overview

Date:	Weds 10th September (postponement Weds 17th September)
Time:	9.00am - 2.30pm
Venue:	Summerhill MTB Park (Jumps Park)
Cost:	\$30 for individual event, \$30 for Team Relay
Divisions:	Year 4, 5 & 6
Event Director:	DirtCraft - Tristan 0278347223 & <a href="mailto:tristanhride@gmail.com">tristanhride@gmail.com</a>
Entry Procedure:	Riders must enter through their school. The TIC or sports coordinator can register riders.
Entries Due:	Mon 1st September (3.00pm)
Invoices:	Sent on Thurs 18th September and must be paid by 2nd October.

No refund policy from 5th September unless presented a medical certificate by 17th September.

## Schedule

*\*TST = Technical Skill Testing*

*Please note race briefing will occur around 10 minutes prior to the race start at the start line.*

9.00am to 9.10am	Managers Meeting
9.15am to 9.30am	Registrations Open (All events)
9.30am to 10.00am	Y5 & Y6 Technical Skill Testing Briefing
10.00am to 10.45am	Y5 & Y6 Technical Skill Testing
10.15am to 10.45am	Y4 Boys & Girls Race (20 min)
10.30am to 10.35am	Y4 Prize Individual Race Giving
11.00am to 11.40am	Y5 Boys & Girls Race (25 min)
11.45am to 12.20pm	Y6 Boys & Girls Race (30 min)
12.30pm to 12.40pm	Y5 & Y6 Individual Race Prize Giving
1.00pm to 1.35pm	Mixed Relay Race (max time 30min)
1.45pm to 2.00pm	Mixed Relay Prize Giving
2.30pm	Event complete



## Entry Criteria

- Mountain Bike Check - Knobbly tires, safe working order, bar ends in, inflated tires, brakes are functioning properly, and chain is secure (and shifting if multi geared), bar plugs installed.
- The course will have little climbs, with fun flowy rollers and tabletops, as long as riders can ride easy grade 3 trails they will be okay to compete (Such as Challenge Roadside or Te Poaka in Rotorua).

## Race time

- Y4s 20min
- Y5s 25min
- Y6s 30min
- Relay 6 laps (2 per rider)

Individual events consist of multiple laps of the circuit within the time frame. Riders will not be able to commence a new lap once the course is shut, however, they will be able to finish their current lap. (Year 4 - 20 minutes, Year 5 - 25 minutes, Year 6 - 30 minutes)

## Volunteers

- We ask that each school with 3 or more riders at the event bring x1 volunteer (with or without a bike and they are to attend marshal briefing or report to Anna once on site).
- Please complete the link attached here to register as a volunteer. We will be in touch with information for the day in due course.  
<https://forms.gle/wb6mPxTX3onpQwx46>

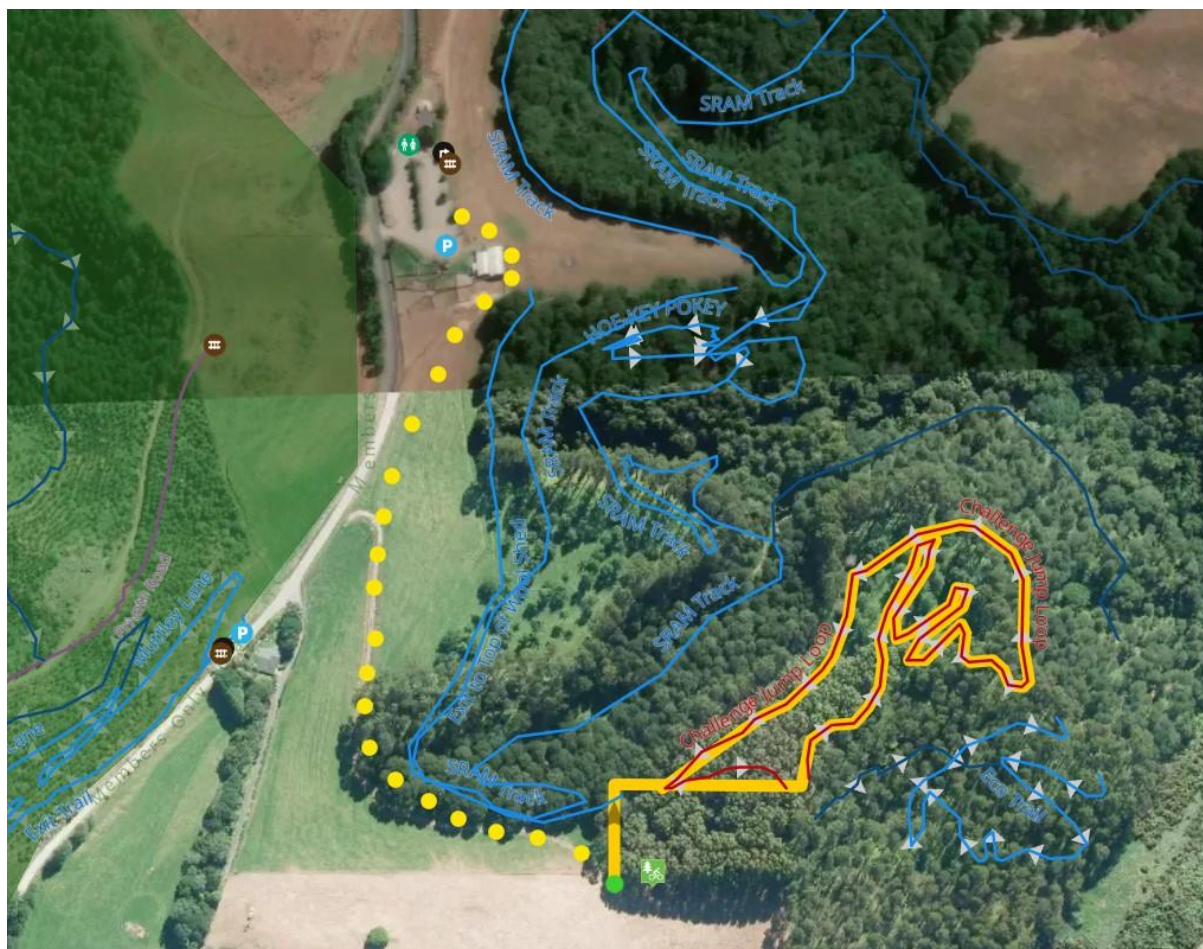
## Team Relay Event

- Teams must consist of 3 riders, at least 1 boy and 1 girl. These riders can be any combination of Year 4,5 and 6 (I.E 1x Year 6 Boy, and 2x Year 5 Girls).
- Riders will complete two laps each. The team who finishes 6 laps first, wins.
- If you don't have a team, then bring \$10 cash on the day and we can build composite teams that can race for fun.
- Schools may enter multiple teams.

## Course & Parking

Parking will be in the main Summerhill Carpark 319 Reid Road.

Attached is a map of the race course and the walking route to get the event course. Please park at the main Summerhill Carpark 319 Reid Road Papamoa. The course is a 1.2km lap with around 30m of climbing per lap. Riders will complete as many laps as they can in the allocated race time. (If a rider is on a lap when the time ends, they are permitted to complete that lap).



[Click Here](#) for course information.

There will be yellow ribbons to follow which will lead you to the event village and race course from the carpark. The course is set up about a 600m walk from the carpark.

If you have a bunch of gear to bring (i.e chilly bins and tents), that is welcome. Just let me know by Monday (8th September), and I can arrange for it to be transported down (all spectator vehicles must park in the carpark 319 Reid Road).

## Manager Information

All schools registration packs must be picked up between 9.10am to 9.30am. If you can not make this window, please notify Tristan prior to Monday 8th September.

Please meet Tristan by the DirtCraft tent at 9.00am for Managers meeting.

## Technical Testing

Technical testing is optional!

Year 5 & 6 Riders may choose to participate in Technical Skill Testing as apart of their entry.

For WBOP Primary 2025 we will have 6x execution stations setup for the riders to attempt. There is no awards for technical skill testing. However, it does dictate seeding. See the Technical Skill Testing Guide on the website for more information about TST.

## Contingency Plan

We will make a decision late Tuesday evening if the event is going to be compromised by the weather. If we are compromised then the event will be held at the same day & time in the following week. This will be communicated to the team manager and sports coordinator by email.

